

Specifications of PAC-K Injection Molding Machines

(Selection of Injection Unit Depends on the Product Requirements)

DESCRIPTION	UNIT	PAC250K				PAC350K				PAC450K				
International size		440/2500		640/2500		840/3500		1080/3500		840/4500		1080/4500		
INJECTION UNIT														
Shot volume	cm ³	221	280	334	412	442	535	636	594	707	535	636	594	707
Shot weight	g	203	258	307	379	406	492	585	546	650	492	585	546	650
	oz	7.2	9.1	10.8	13.4	14.3	17.3	20.64	19.3	22.9	17.3	20.6	19.3	22.9
Screw diameter	mm	40	45	45	50	50	55	60	55	60	55	60	55	60
Injection pressure	MPa	199.3	157.5	194.4	157.5	190.6	157.5	132.3	187.4	157.5	157.5	132.3	187.4	157.5
Screw L:D ratio		22:1				22:1				26:1		22:1		
Injection speed	mm/s	291		236		320		269		585		491		
Carriage stroke	mm	400				450				450				
Screw stroke	mm	176		210		225		250		225		250		
Screw speed	r/min	0-300				0-300				0-300				
CLAMPING UNIT														
Clamping force	kN	2500				3500				4500				
Opening stroke	mm	560				610				700				
Space between tie bars	mmxmm	580×580				630×630				720×720				
Max. daylight	mm	1160				1260				1450				
Mold thickness	mm	200-600				250-650				370-750				
Ejector stroke	mm	180				180				200				
Ejector pin number		13				13				13				
Ejector force	kN	137				137				137				
POWER UNIT														
Hydraulic system pressure	MPa	17.5				17.5				17.5				
Oil pump motor	kW	55				55+33.9				55+55+55				
Heating capacity	kW	11	11	11	16.5	16.5	22	24.8	22	25	22	24.8	22	24.8
Number of temp. control zone		5				5				5				
GENERAL														
Dry cycle time	s	1.8				2				2.2				
Oil tank capacity	l	650				650				950				
Machine dimensions	mxmxm	6.4×1.91×2.1				6.9×2.05×2.2				8.2×2.1×2.3				
Machine weight	Ton	10.75				13.31				19				

■ Note: We reserve the right to make changes or improvements of the product without prior notice.

The product photos in this catalog are for reference only.

广东伊之密高速包装系统有限公司
GUANGDONG YIZUMI HIGH SPEED PACKAGING SYSTEM CO., LTD.

Address: No.9, Shunchang Road, Daliang, Shunde, Foshan, Guangdong Province, China 528306

TEL: 86-757-2926 2215 www.yizumi.com Email: imm@yizumi.com



Designed by Yizumi in January 2019

PAC-K



New-generation Injection Molding Machine for Fast Food Container

Thin-wall Injection Molding System Solution

YIZUMI 伊之密

About Us



Guangdong Yizumi High Speed Packaging System Company Limited is established to cope with the world's growing demands for high-speed packaging equipment. With strong financial base, large company size and elites in R&D, design, manufacturing, service and marketing, we pursue the mission of "Facilitate Chinese machine technology keeping pace with the world and provide global customers with better investment return and experience".

We, based on the ideas of "highly-efficient, precise, economical, reliable, energy-saving and environment-friendly", offer turnkey high-speed injection molding systems for different types of thin-wall plastic packaging products such as food containers, IML ice cream containers, IML buckets and IML packaging containers.

We have a team of innovative R&D elites. Through highly-efficient management, cutting-edge machining equipment, complete constant-temperature dust-free production lines, innovation, the spirit of working earnestly and years of experience in machine manufacturing, we can offer specialized thin-wall injection molding solutions.

Since establishment, we have always aimed to meet the customer needs, offer turnkey solutions for customers, serve them sincerely, create more value and provide better investment return for them. In addition, we are committed to establishing five-star service system in the industry and consistently endeavor to provide speedy and accurate services for customers worldwide and increase their competitiveness.

Processes of Thin-wall Injection Molding System



Thin Wall Injection Molding Machine

NEW PAC-K Series Injection Molding Machine
for Fast Food Container

- Higher Injection Speed
- Upgraded Control System
- Optimized Platen Design



High-precision injection control system



Durable high-rigidity clamping unit



High-response hydraulic system



Single-cylinder injection system with high precision

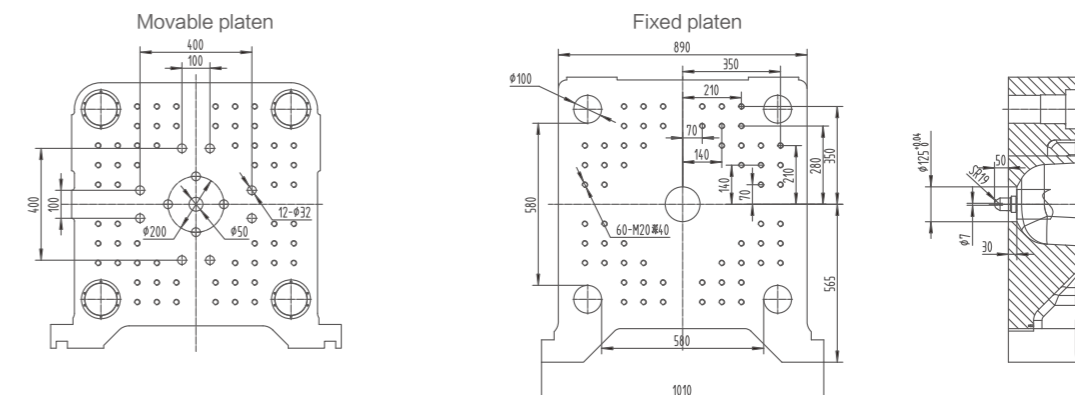
Application Examples of Thin Wall Injection Molding System



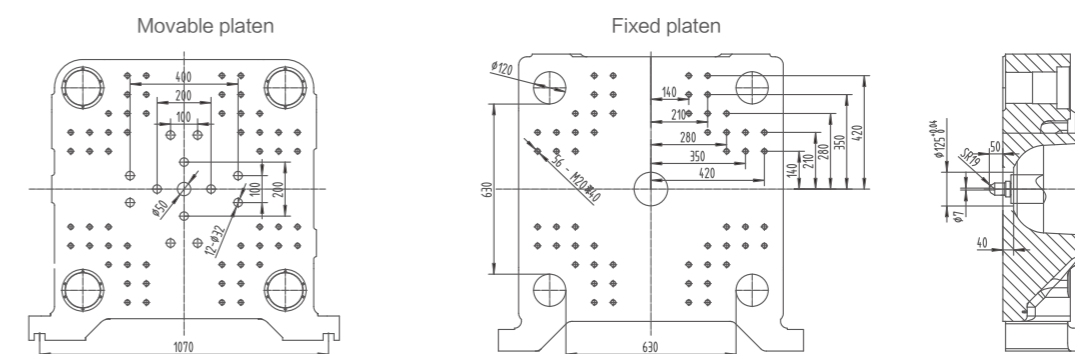
Information of molded part		Information of IMM		Information of plastic material		Information of mold	
Molded part	1000ml fast food container	Machine model	PAC350K	Plastic material	PP	Cavity number	4
Size (l×w×h)	175mm×116mm×70mm	Shot weight	579g	Melt mass /flow rate	50g/10min	Platen number	2
Unit weight	16.8g	Space between tie bars (mm×mm)	630mm×630mm	Tensile yield stress	38.6Mpa	Runner	hot runner
Wall thickness	0.38mm	Mold thickness (min.- max.)	250mm-630mm	Manufacturer	Langang Petrochemical	Size	850mm×540mm×470mm
Cycle time	5.5s	Opening stroke	610mm	Grade	H9018	Weight	1.6Tons

Actual Energy Consumption Test							
Accumulative energy consumption	EP(Wh)	Test time (s)	Part weight (g/cycle)	Output (pcs)	Weight of raw material (kg/h)	Energy consumption (kw.h)	Average energy consumption (kw.h/kg)
Σ	8.11	1200	67.2	2313	38.8	24.33	0.627

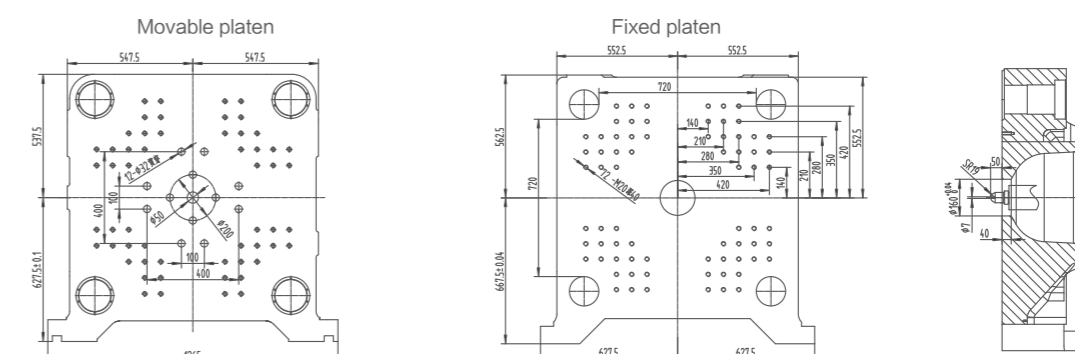
Platen Dimension Drawings



PAC250K

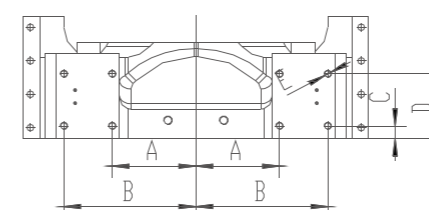


PAC350K



PAC450K

Robot Mounting Holes in the Fixed Platen



	A	B	C	D	E
PAC250K	280	380	35	175	M20 T 40
PAC350K	300	420	35	175	M20 T 40
PAC450K	350	490	35	175	M20 T 40